

Lead-lined Gypsum Board / Drywall

MAYCO lead-backed gypsum wallboard is furnished as 1/2" and 5/8" type "X" fire code gypsum board meeting classification ASTM C 1396, or mildew/water resistant or high impact wall board with pure lead sheet, meeting federal specification QQ-L-201 F, factory laminated to the back side of the gypsum panel. When using 49" width lead, the lead extends 1" beyond one vertical edge of the lead-lined gypsum board to allow for overlapping of joints thus alleviating the need for separate lead joint strips. Lead strips are required at the corners. Lead shielding accessories for installation include lead discs for screw penetrations and sheet lead for backing and shielding of cut-outs for electrical, plumbing, medical gas or other penetrations as well as corners.

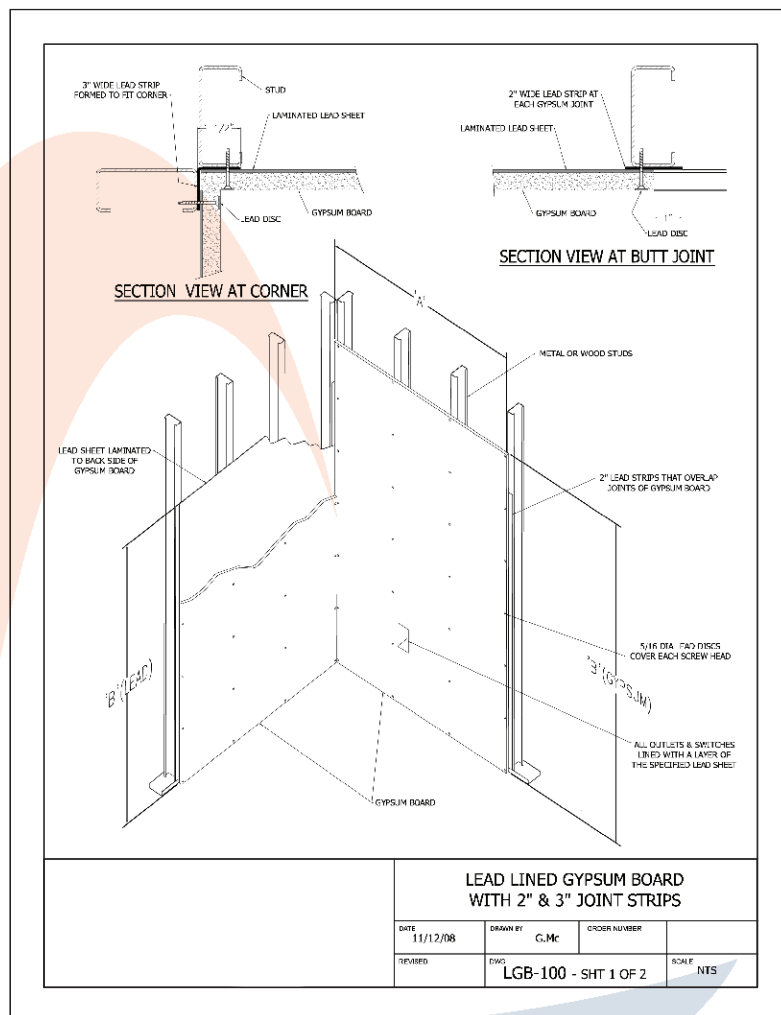
Installation: As shown, the lead-lined drywall should be attached to support studs every 12 inches horizontally and 8 inches vertically. When using 48 inch drywall 2 inch lead strips should be used on each of the support wall studs. This should be attached or glued prior to installing wall board and provides suitable overlap where drywall sections meet.

All openings (plugs, etc.) should be double lined with lead sheet. Drywall screws should be covered with lead discs (provided by Mayco).

Available in 47-3/4 Inch and 49 inch Widths

Lead-Lined Plywood

Mayco also offers lead-lined plywood and accessories for lead lining walls, ceilings and floors. For our lead-lined plywood, we use our own lead sheet. This is adhered to one side of the plywood. Mayco leaded plywood is an excellent way to construct radiation shielded rooms.



Lead Sheet Thickness

- 1/32 in
- 3/64 in
- 1/16 in
- 5/64 in
- 3/32 in
- 1/8 in

Drywall sizes:

- 4 ft X 8 ft
- 4 ft X 9 ft
- 4 ft x 10 ft

Additional lead thicknesses available upon request.

Attenulead - noise control lead sheet

Sheet lead is one of the basic materials for acoustic control systems. Lead is an extremely efficient barrier material by itself or fastened to studs as part of a wall. Lead sheet can also be adhesively bonded to gypsum board or plywood. Mayco Industries is America's leading producer of sheet lead.

In general, there are three functions for describing Acoustical Control:

1. Blocking of sound paths by barriers
2. Damping of structures and surfaces - to reduce vibration and radiation of airborne sound
3. Absorbing sound - usually by light fibrous materials

Attenulead has been developed to help control noise in various interior environments: hospitals, schools, office buildings, industrial plants, apartment buildings and other multi-family housing.

Advantages of Attenulead are:

High Density, Natural Limpness and Easily Adaptable.

Attenulead is generally available in 1/64" thick x 4' wide x 20' long. Special sizes are available upon request.

Lead for Noise Control Compared to Other Materials

Approximate thickness of single, simple partitions to meet permissible transmission loss requirements

Material	Moderately Noisy Office	Quiet Office	Very Quiet Office
Fir Plywood	3.67"	6.67"	13.33"
Sand Plaster	0.2"	4.45"	8.9"
Glass	0.13"		9.3"
Dense Concrete	0.14"	4.85"	12.2"
Aluminum	0.13"	5.7"	11.3"
Steel	0.0045"	0.2"	7"
Lead	0.03"	0.135"	0.54"

Mayco Industries-Birmingham

18 West Oxmoor Road Birmingham, AL 35209 Ph: 800-749-6061 Office: 205-942-4242 Fax: 205-945-8704

Mayco Industries-Granite City

1200 16th Street Granite City, IL 62040 Ph: 800-749-6061 Office: 618-451-4400 Fax: 618-451-9310

www.maycoindustries.com sales@maycoindustries.com